

Predict Critical Health Risks in Real Time with Intel® AI at the Edge

Edge VisionMed



ADM
INFORMÁTICA



DELL Technologies



intel

Edge VisionMed is an advanced edge AI healthcare solution designed to continuously monitor vital signs and proactively detect critical health risks before they escalate into life-threatening events. By analyzing data such as heart rate, SpO₂, and respiratory patterns in real time, the platform enables faster clinical response, improves patient safety, and supports continuous monitoring across hospitals and clinical environments.

Unlike traditional cloud-dependent systems, Edge VisionMed performs AI inference locally at the edge, ensuring low latency, high availability, and uninterrupted operation even in bandwidth-limited or remote settings. This architecture enhances data privacy by keeping sensitive medical information on-premises, reduces network dependency, and lowers operational costs. The solution has been validated and onboarded on the Dell PowerEdge R760 platform, featuring 5th Generation Intel® Xeon® Scalable processors, delivering enterprise-grade performance, reliability, and scalability.

Optimized with the OpenVINO™ toolkit, Edge VisionMed accelerates AI inference on Intel® CPUs using FP16 and INT8 models, enabling efficient computer vision and signal analysis without the need for dedicated GPUs. Together, Intel hardware and software technologies enable scalable, secure, and high-performance edge AI deployments for healthcare.

*Unprecedented
data privacy
enabled
by edge
computing
with local AI
processing
and no cloud
dependency.*

Intel Products & Technologies

Accelerating AI and analytics at the edge



[Intel® Core™ Ultra
Series 3 Processors](#)



[Intel® Core™
Processors](#)



[Intel® Xeon®
Scalable Processors](#)



[Intel Atom®
Processor X series](#)



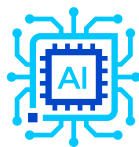
[OpenVINO™
Toolkit](#)

Key Intel-Enabled Features

Real-Time AI and analytics make it easy



Real-Time
Vital Risk Alerts



CPU-Optimized,
GPU-Free AI



Low Latency Edge
AI Inference



Scalable Proactive
Care Edge

Built on Intel Processors and optimized with the OpenVINO™ toolkit, ADM Informática and Dell deliver:

01



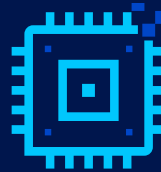
Edge AI acceleration
for ultra-low-latency
inference

02



Scalable, reliable
compute for healthcare
workloads

03



Efficient processors
powering edge AI
deployments

04



Optimized, secure
platform for medical AI
analytics

That's the power of Intel Inside®.

Country/Geo:

Worldwide

Verticals:

Health & Life Sciences

Use Cases:

Image Analysis
Virtual Care
Genomics Informed

About ADM Informática

Founded in 1987, ADM Informática is a Brazilian firm specializing in Business Management, Data Processing, IT, Accounting Services, and Tax Advisory. Serving private-sector industries, retail, and services, the company follows international standards and is distinguished by high customer satisfaction, quality, security, and reliable, effective solutions through decades of trusted expertise.

edgevisionmed.com

[Edge VisionMed - Edge AI
Partner Spotlight](#)

intel ai

Intel® AI Edge Applications

About Dell Technologies

Dell Technologies is a global technology company driven by the purpose of advancing human progress through technology. It designs and delivers innovative solutions that help customers transform how they work, live, and connect—enabling digital transformation, improving access to technology, and supporting organizations worldwide across industries and communities.

www.dell.com/en-us

[Dell PowerEdge R760 Rack Server -
Edge AI Partner Spotlight](#)

intel ai

Intel® AI Edge Systems

Notices & Disclaimers:

Intel technologies may require enabled hardware, software or service activation. // No product or component can be absolutely secure. // Your costs and results may vary. // AI features may require software purchase, subscription or enablement by a software or platform provider, or may have specific configuration or compatibility requirements. Intel Statement on Product Usage: Intel is committed to respecting human rights and avoiding causing or contributing to adverse impacts on human rights. See Intel's [Global Human Rights Principles](#). Intel's products and software are intended only to be used in applications that do not cause or contribute to adverse impacts on human rights.

© Intel Corporation, Intel, the Intel logo, Intel Core, and other Intel marks are trademarks of Intel Corporation or its subsidiaries.

Other names and brands may be claimed as property of others.